

The Central Manager for NIKSUN Appliances

NIKSUN Central Manager is a Web-based application that provides services to remotely manage NIKSUN appliances. The ability to simultaneously deploy and manage all the NIKSUN appliances from a central console with a single keystroke, enables administrators to save considerable time & resources, and allows them to focus on solving their business issues.

Centrally Provision & Configure Appliances/Interfaces

By enabling the configuration and provisioning of appliances & interfaces from a single location, Central Manager eliminates repetitive work and simplifies administrative tasks. Interfaces and appliances can be provisioned collectively or individually. Central Manager allows users to centrally configure alarms, networking configuration, add and edit security signatures for an individual or a group of appliances.

Backup and Restore System Configuration

The configuration information, including user accounts, networking configuration, security signatures, alarm configuration, application-level data and more, for every appliance is automatically backed up in the Central Manager. This information can be restored on any appliance with a mouse-click.

Manage Groups of Users, Appliances, and Interfaces

Assignment of Logical groups of Appliances or Interfaces allows for single-click operation on or management of any collection of appliances. Groups of Appliances or Interfaces can also be viewed collectively and their settings can also be collectively modified.

View Health and Status in Real-time

Central Manager maintains real-time health and status information of the NIKSUN appliances, e.g., connection status, monitoring recorder status, used/available disk space, CPU usage, etc.

Role-based Access Control

Central Manager uses a role-based access control (RBAC) mechanism to authorize users to perform selected tasks. Users can be authenticated by the local authentication server or by a TACACS+ centralized authentication server.

Remote Upgrades/Updates of Software

Central Manager enables users to remotely update and upgrade software (including full appliance upgrade, service patches and additional modules) on all NIKSUN appliances in one operation.

Detailed Logs of All Activities

Log files record all server activities, Central Manager user & administrator actions, and system-related activities.

Minimum System Requirements: Pentium III (900 MHz, or higher) Intel-based server class system with one or more 2MB level-2 write-back caches per CPU, 256 MB RAM, 100MB free space, CD-ROM or DVD-ROM, Fast Ethernet Network Adapter. Microsoft Windows 2000 Server with Service Pack 2/Windows NT or Red Hat Enterprise Linux WS 4 . Sun Java Runtime Environment 1.4 or 1.5. The Central Manager appliance is also available on request.

Centrally Provision & Configure NIKSUN Appliances

Remotely Upgrade & Update Software

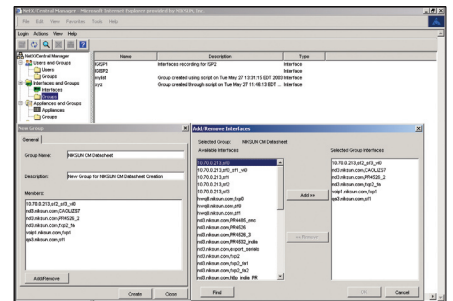
Role-based Access Control

Simplify Administration Tasks

An Integrated and Scalable solution that reduces time for repetitive tasks, eases system management, and increases employee productivity

Benefits

- Remotely & securely manage NIKSUN appliances
- Save time and costs to deploy and maintain multiple NIKSUN appliances
- Increase productivity by eliminating repetitive configuration and provisioning work
- Remotely update and upgrade software
- View appliance health information in real-time
- Logically group appliances, interfaces, and users. Change group attributes with one click



Manage groups of interfaces, appliances, and users



NIKSUN, the NIKSUN logo, NetDetector are either registered trademarks or trademarks of NIKSUN, INC. in the United States and/or other countries. Other product & company names mentioned herein may be the trademarks of their respective owners. NIKSUN, INC. shall not be liable for damages of any kind for use of this information, which is subject to change without notice. Copyright© 2005 NIKSUN, INC. All rights reserved. NK-DS-CM06.1



www.niksun.com